

# LEGENDS PINBALL

## ARCADE CONTROL PANEL

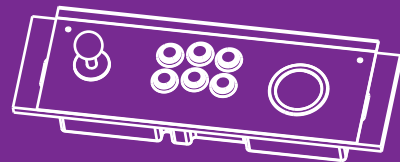


### INSTRUCTION MANUAL

#### Tools/Parts Required



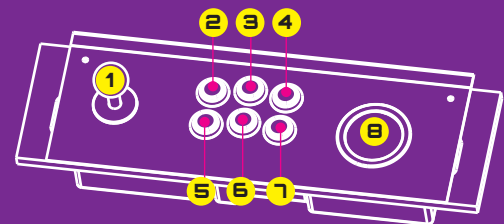
Phillips head screwdriver  
(not included)



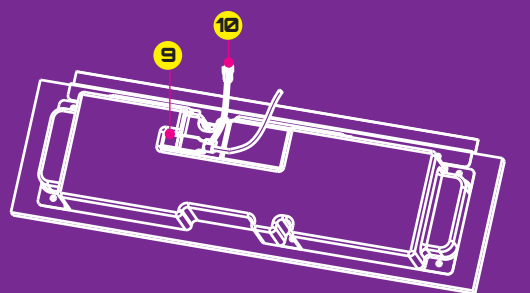
Arcade Control Panel  
(included)

#### Arcade Control Panel Features

FRONT



BACK

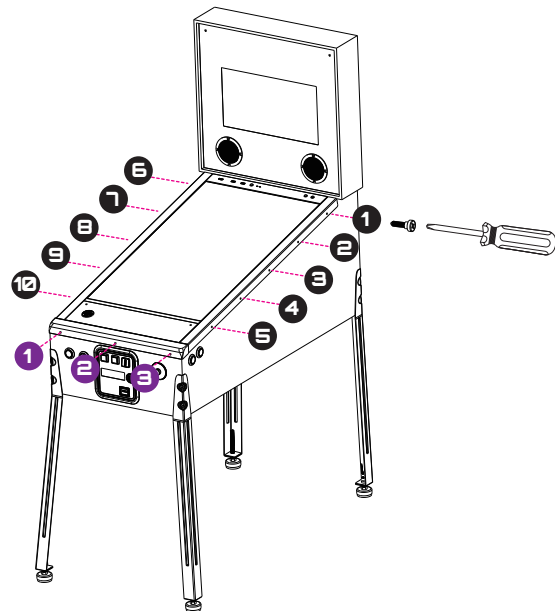


- |            |             |                                  |
|------------|-------------|----------------------------------|
| 1 Joystick | 5 A button  | 9 USB port                       |
| 2 X button | 6 B button  | 10 Haptic feedback speaker cable |
| 3 Y button | 7 C button  |                                  |
| 4 Z button | 8 Trackball |                                  |

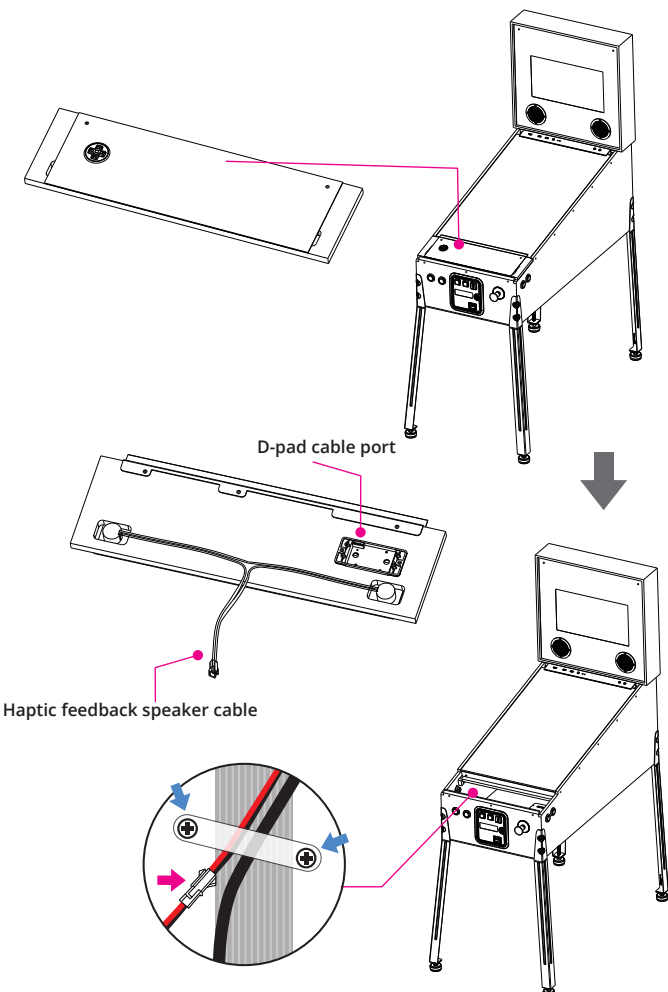
#### Assembly Steps

**Step 1.** Use a Phillips head screwdriver to remove the 3 screws on the front of the apron. Remove all 10 screws on the side panels to the left and right of the main display. Put all screws and panels aside.

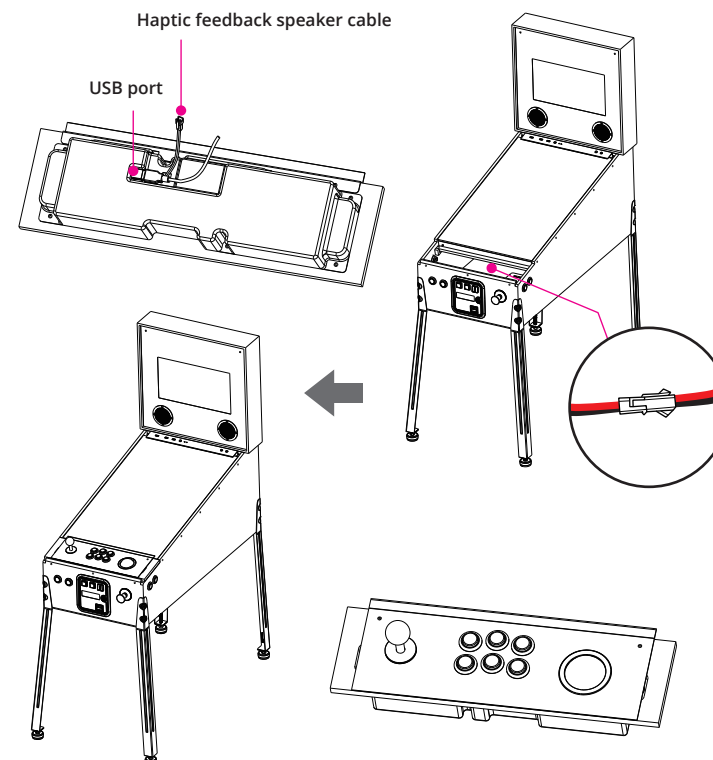
- 10 screws on the side panels
- 3 screws on the front of the apron



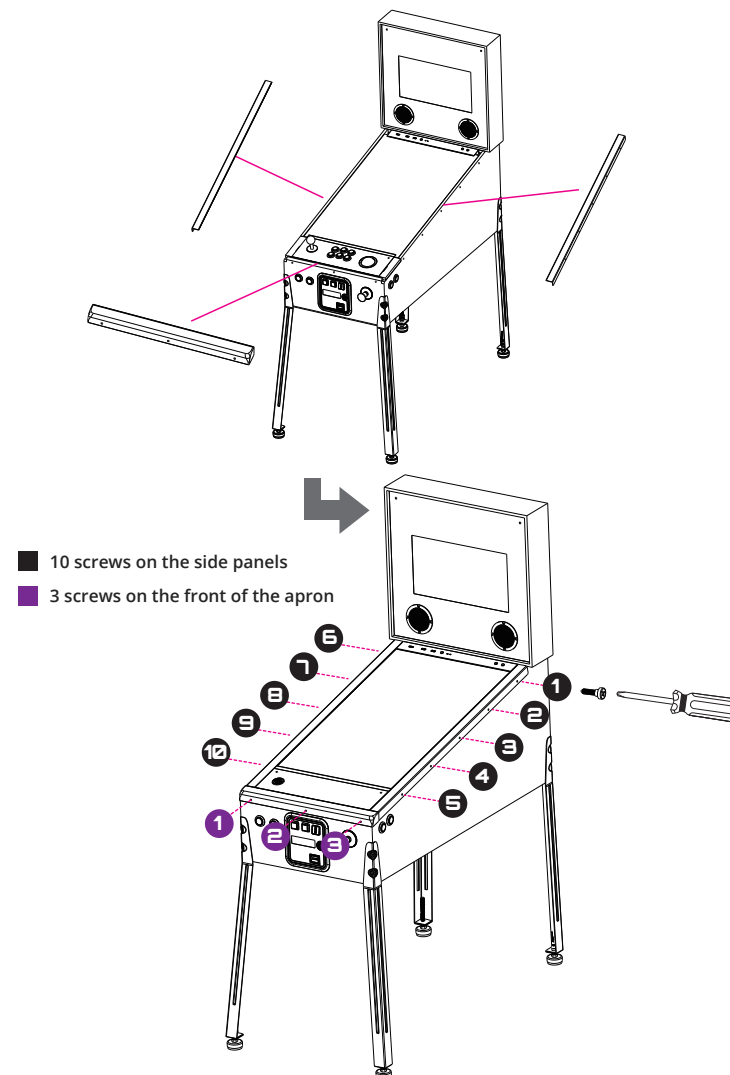
**Step 2.** Lift out the original control top and carefully detach the D-pad connecting cable. Detach the haptic feedback speaker cable. Remove the screws holding the USB cable.



**Step 3.** Place the Arcade Control Panel over the original control top. Take the USB cable from the inner side of the pinball machine and connect both that and the haptic feedback speaker cable to the Arcade Control Panel.



**Step 4.** Place the left and right side panels back to their original positions by the main display and secure them with the 10 screws. Once both left and right side panels are reattached, replace the front panel and fasten with the 3 screws.



#### Warranty Info

The manufacturer warrants this product to be free and clear of defects in the materials and workmanship, under normal residential use and conditions, for a period of thirty (30) days from the original invoice date. Shipping and handling fees are to be paid for by the customer. To make a warranty claim, please submit a service request here: [support@atgames.net](mailto:support@atgames.net).

Standard warranty coverage for the AtGames Arcade Control Panel does not apply to and is considered invalid due to misuse, improper maintenance, self-repair, tampering, or invasive hardware modifications of any kind, and damages or dysfunction caused by shipping or non-manufacturing related causes.

Note: Standard warranty services are valid with receipt from an authorized retailer. Purchases through third-party sellers and resellers do not fall under the standard warranty program. For warranty support, please contact the third-party seller or reseller where you purchased the product.

#### Safety Notice

- Do not submerge the device in water or expose it to extreme heat or to strong magnetic fields. Doing so may cause permanent damage to your device.
- Always use a dry towel to clean the device.
- Transformers are suitable for indoor use only. Transformers and power supplies for toys are not intended to be used as toys, and the use of these products by children shall be under the full supervision of parents.

#### FCC Statement

This equipment has been tested and found to comply with the limits for a Class B digital device, pursuant to Part 15 of the FCC Rules. These limits are designed to provide reasonable protection against harmful interference in a residential installation. This equipment generates, uses and can radiate radio frequency energy and, if not installed and used in accordance with the instructions, may cause harmful interference to radio communications. However, there is no guarantee that interference will not occur in a particular installation. If this equipment does cause harmful interference to radio or television reception, which can be determined by turning the equipment off and on, the user is encouraged to try to correct the interference by one or more of the following measures:

- Reorient or relocate the receiving antenna.
- Increase the separation between the equipment and receiver.
- Connect the equipment into an outlet on a circuit different from that to which the receiver is connected.
- Consult the dealer or an experienced radio/TV technician for help.

Changes or modifications not expressly approved by the party responsible for compliance could void the user's authority to operate the equipment.

This device complies with Part 15 of the FCC Rules. Operation is subject to the following two conditions:

- (1) this device may not cause harmful interference, and
- (2) this device must accept any interference received, including interference that may cause undesired operation.

CAN ICES-3 (B)/NMB-3(B)

**AtGames**

© 2021 AtGames Interactive

[www.atgames.net](http://www.atgames.net)  
PO Box 1691, El Segundo, CA 90245  
All rights reserved.

Made in China

EN For technical support please email:  
[support@atgames.net](mailto:support@atgames.net)

\*Content and images are for reference only and subject to change.

FR Pour contacter le support technique, envoyez un email à :  
[support@atgames.net](mailto:support@atgames.net)

\*Les images du produits sont illustratives et peuvent ne pas refléter sont état final.

